

ATTACHMENT D:  
PUBLIC MEETING PRESENTATION #1

April 2025

# Recreation Facilities Analysis

## Salmon Brook Park and Ahrens Park

### Town of Granby

GZA GeoEnvironmental, Inc.





A photograph of a narrow path between two corrugated metal buildings in a wooded area. The path is covered with dry leaves and branches. The buildings are made of weathered corrugated metal. The background is a dense forest of bare trees. A semi-transparent grey rectangle is overlaid on the image, containing the text "Project Overview" in white.

# Project Overview



# Project Overview

- 116-acre Salmon Brook Park is well-used, has a wide range of recreational amenities.
- 45-acre Ahrens Park offers additional open space, is less programmed





# Project Scope

- Site analysis
- Stakeholder Interviews
- **Public Engagement**
  - **Public Meeting #1: Developing a vision for Salmon Brook and Ahrens Parks**
  - **Online survey**
- **Master Plan**
  - Meeting #2: Presentation on draft Master Plan
  - Final Master Plan: Overall vision for Salmon Brook Park and Ahrens Park, and specific recommendations for site improvements and management

# Project Background





# History of the Parks

- **History of Salmon Brook Park:**

- Granby Hospital 1920-1928, included golf course for patients' use
- Golf course continued as a public amenity until 1945
- Was called "Open Spaces" until 2000s
- "Salmon Brook Park": Increased park improvements 2000s-onward

- **History of Ahrens Park:**

- Town acquired from Ahrens family in 2003
- Park opened in 2005



# 2022 Survey



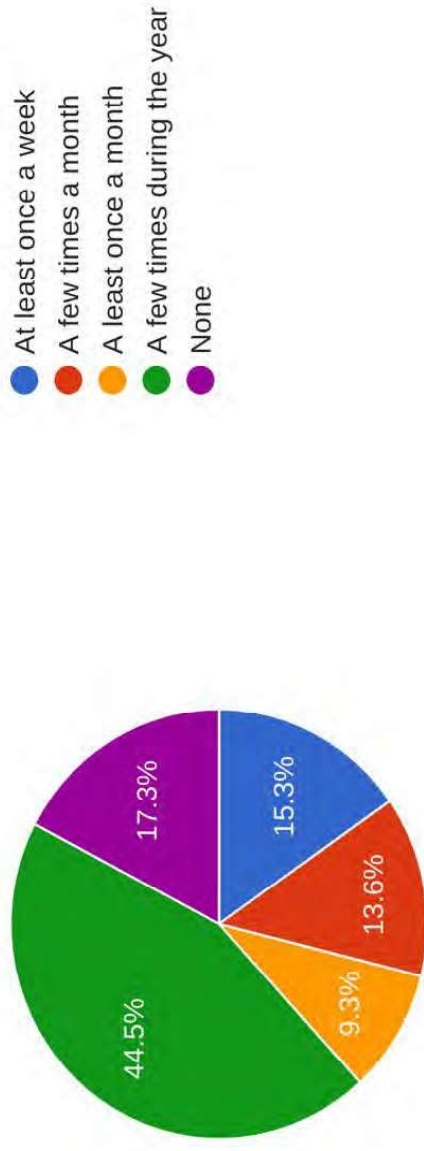
## GRANBY PARKS & RECREATION SURVEY

*Board of Selectmen Overview 1/3/2022*



# PROGRAM USAGE

5- Approximately how often did you or a members of your household participate in a Granby Parks and Recreation program in the last 12 months?  
647 responses



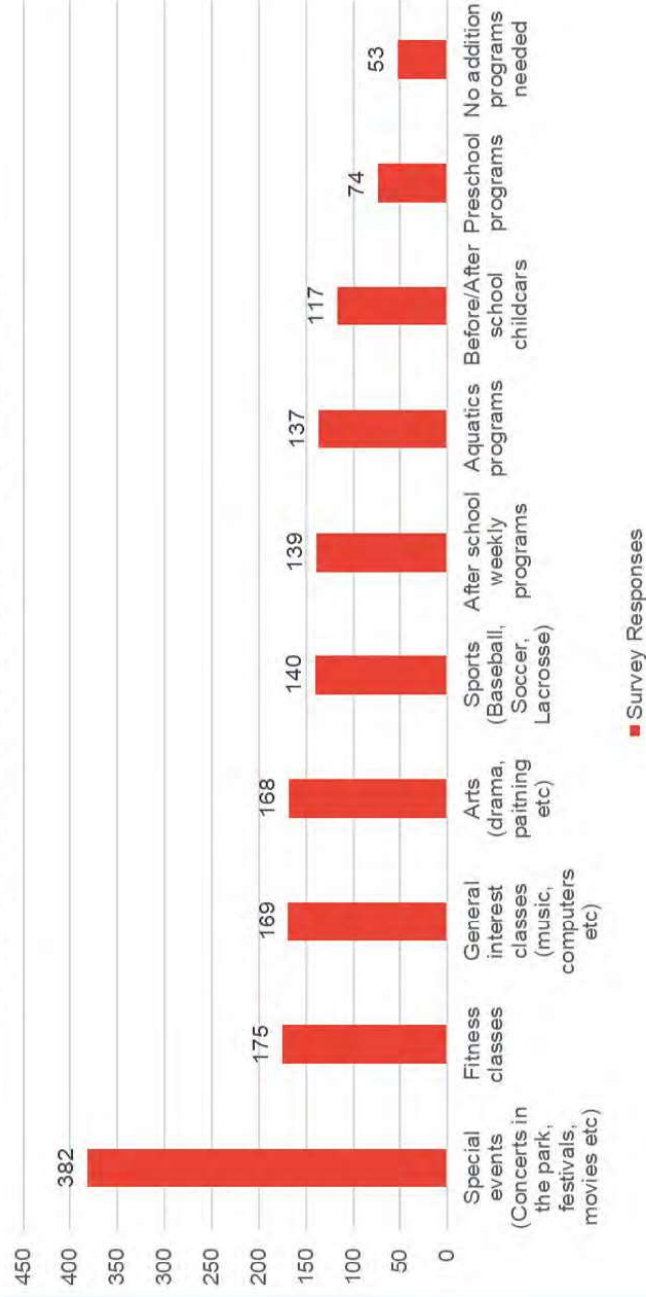
# PROGRAM EXPANSION OPPORTUNITIES

1. Special Events  
*(concerts, festivals, and movies in the park) \**

2. Fitness classes

3. General interest classes  
*(music, computers etc.)*

What additional recreation programs do you feel Granby Parks and Recreation should be offered or expanded?

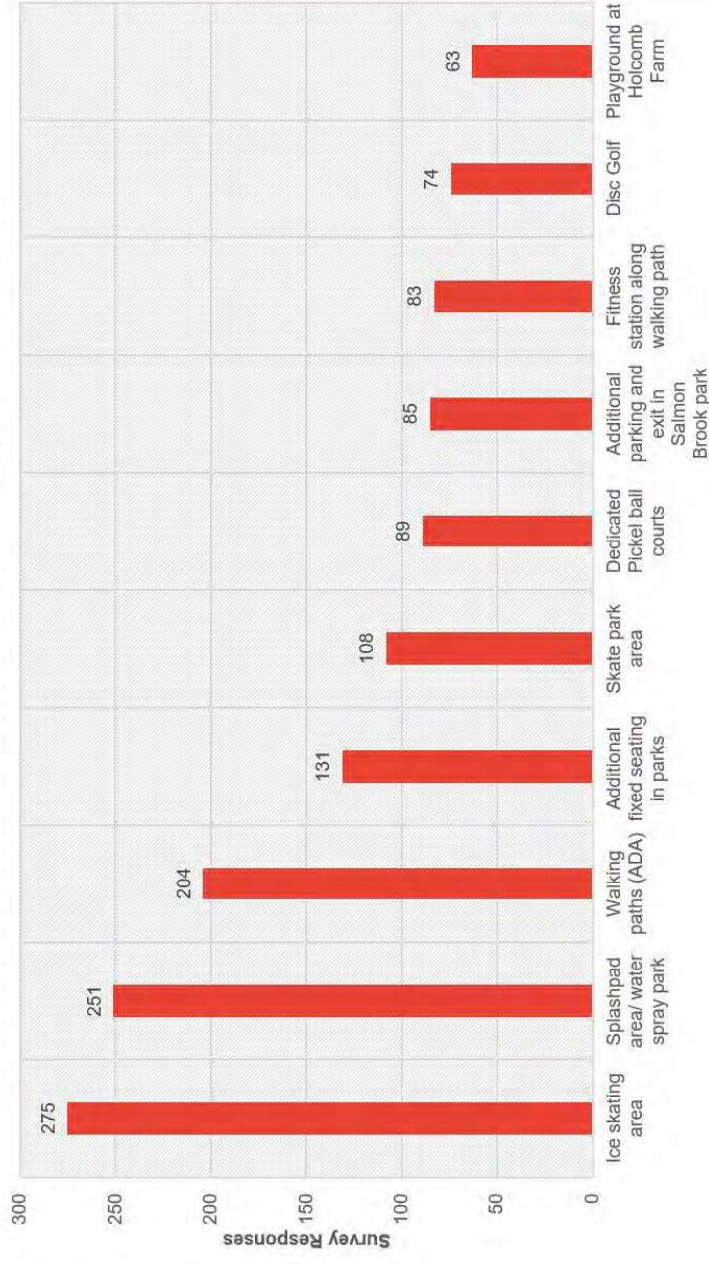




# TOP IMPROVEMENT OPPORTUNITIES

1. Ice skating area
2. Splashpad/water spray park
3. Walking paths (ADA accessible)

Future considerations for improvements at Granby Parks





# Recent Improvements





# Master Plan Goals

- Identify potential park improvements, and suitable locations
  - Possible ideas: contemplative garden, splash pad, skating, skateboarding
  - ADA accessibility
- Identify potential redundancies, conflicting uses, capacity limitations
  - Potentially relocating certain features
- Site analysis: landscape, infrastructure, climate, etc
- **Create a long-term Master Plan for both parks**
- Identify approximate timeframe, cost, permitting, etc

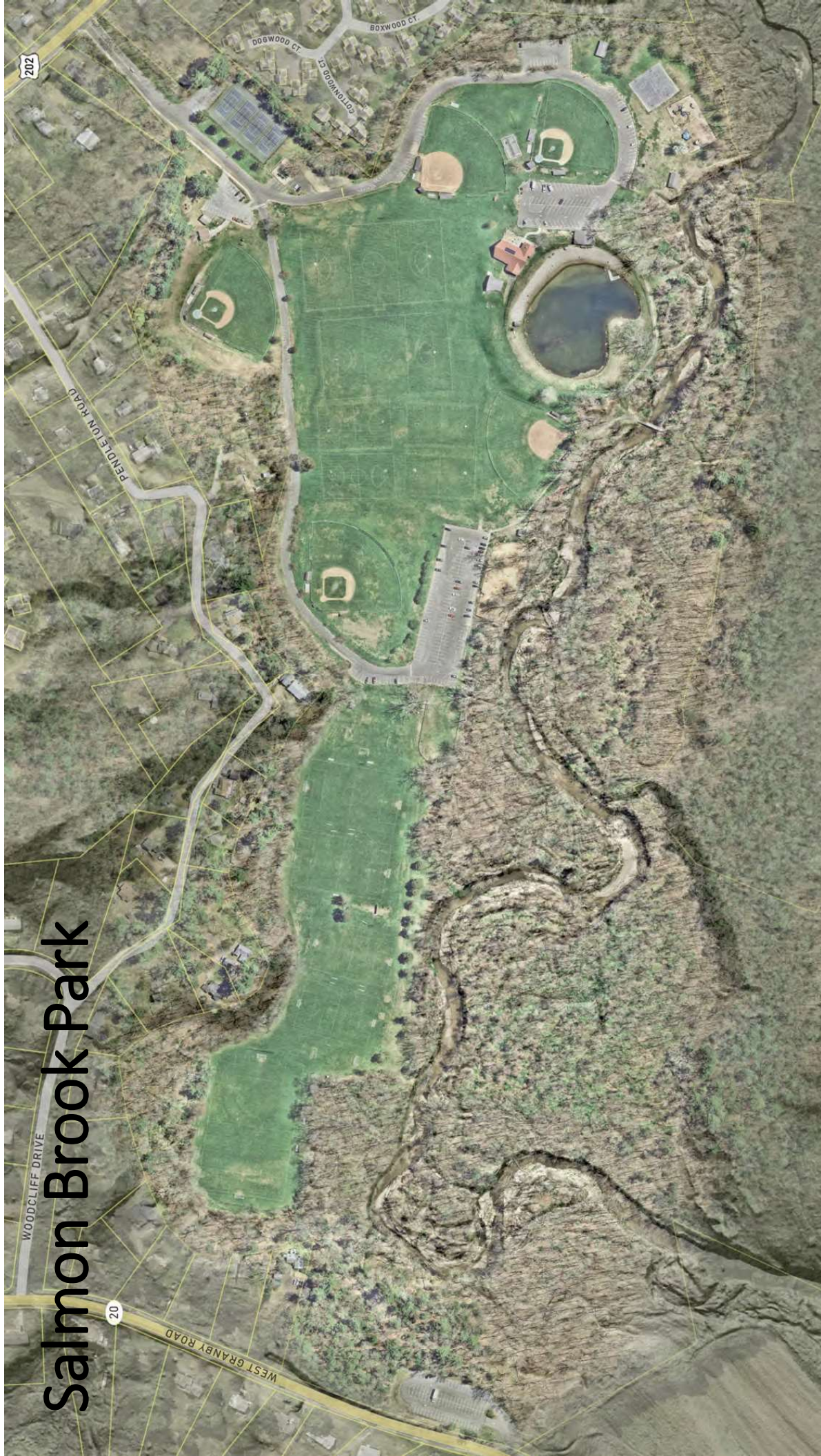


A photograph of a park in a dormant season, likely late autumn or winter. A paved path leads from the foreground towards a tennis court in the middle ground. The tennis court is enclosed by a chain-link fence. To the right of the path, there is a grassy area with a wooden bench. The background is filled with tall, bare trees against a clear blue sky. A semi-transparent grey rectangle is overlaid on the image, containing the text "Existing Conditions".

# Existing Conditions

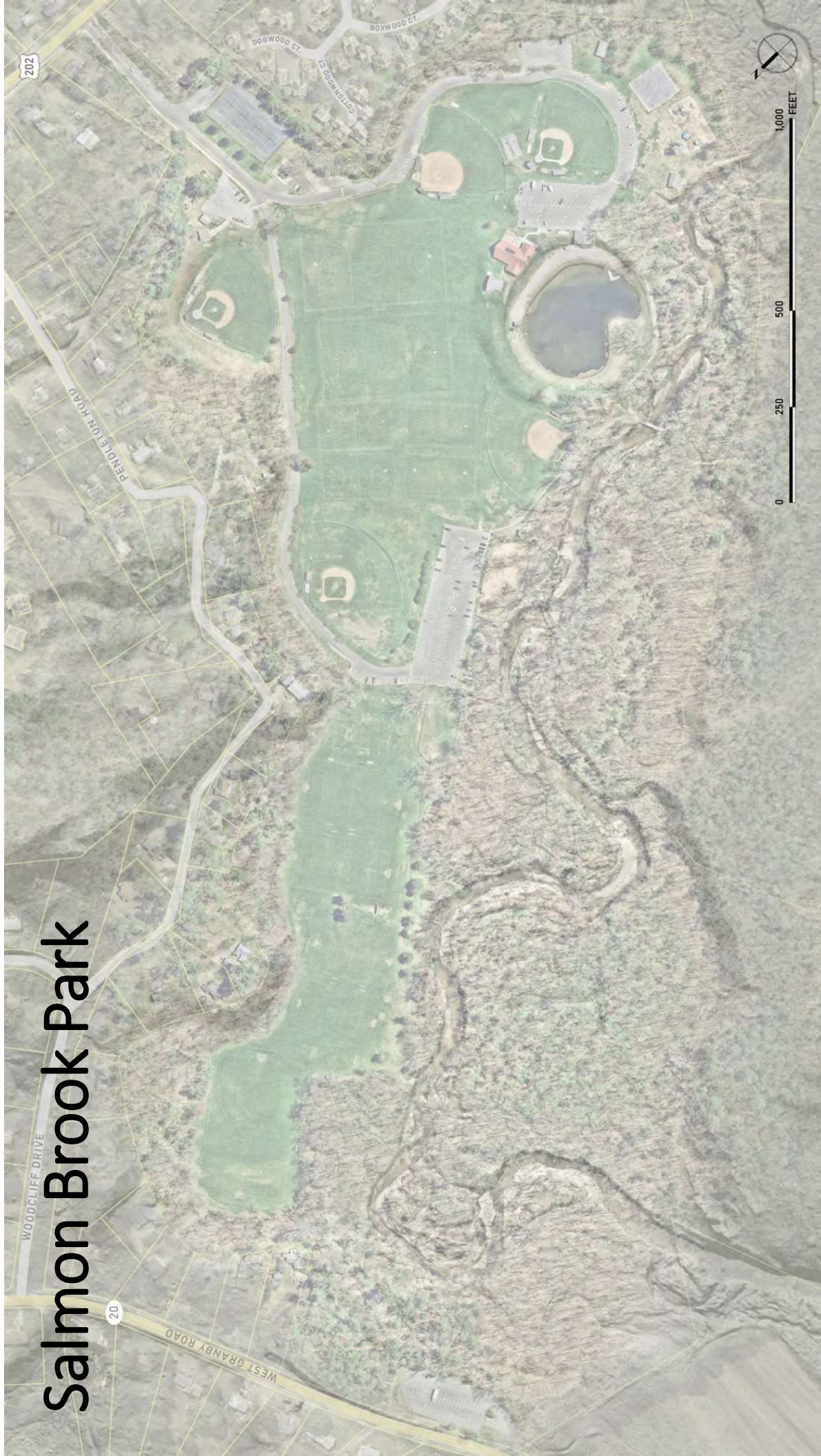


# Salmon Brook Park





# Salmon Brook Park



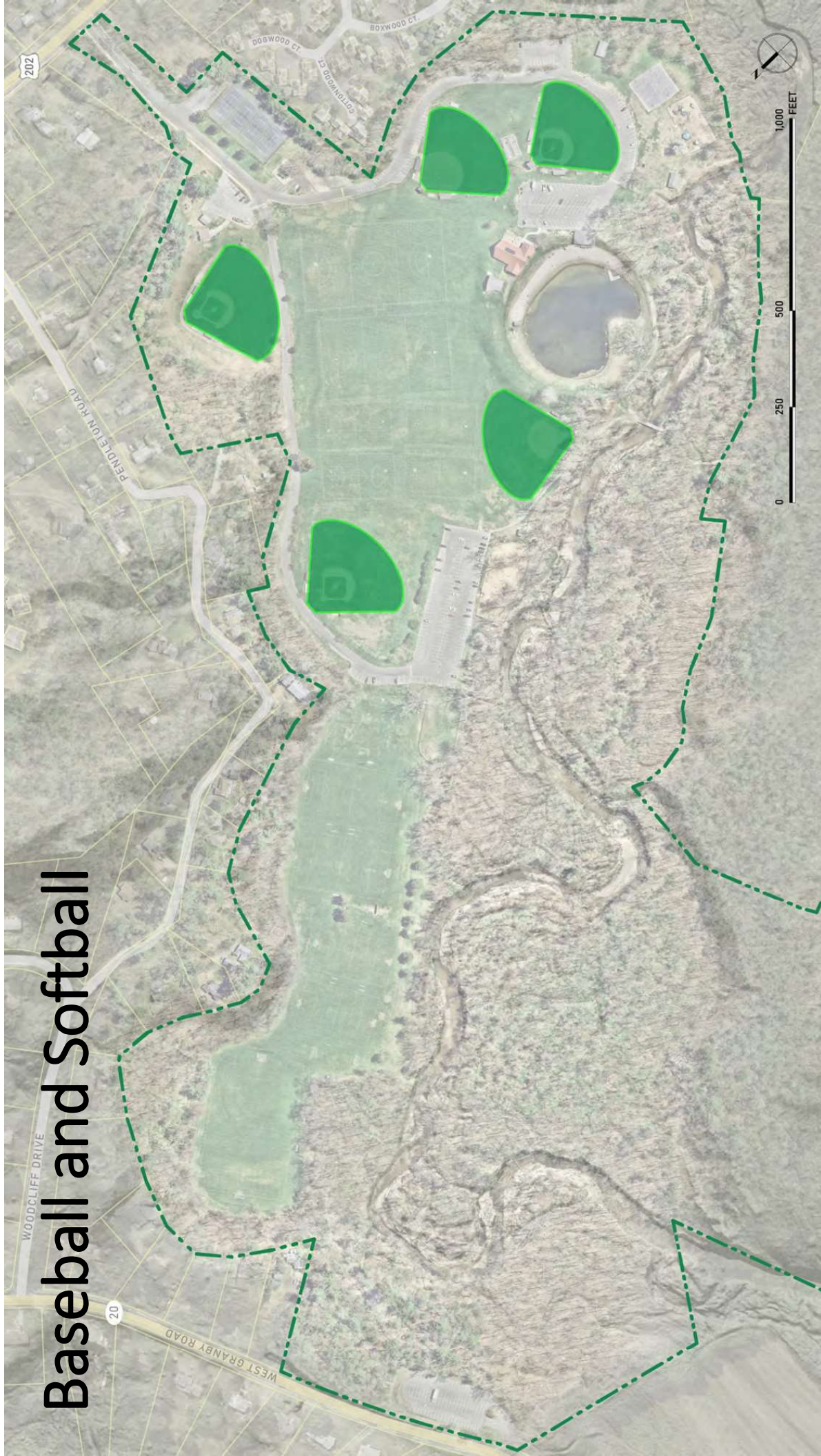


# Salmon Brook Park



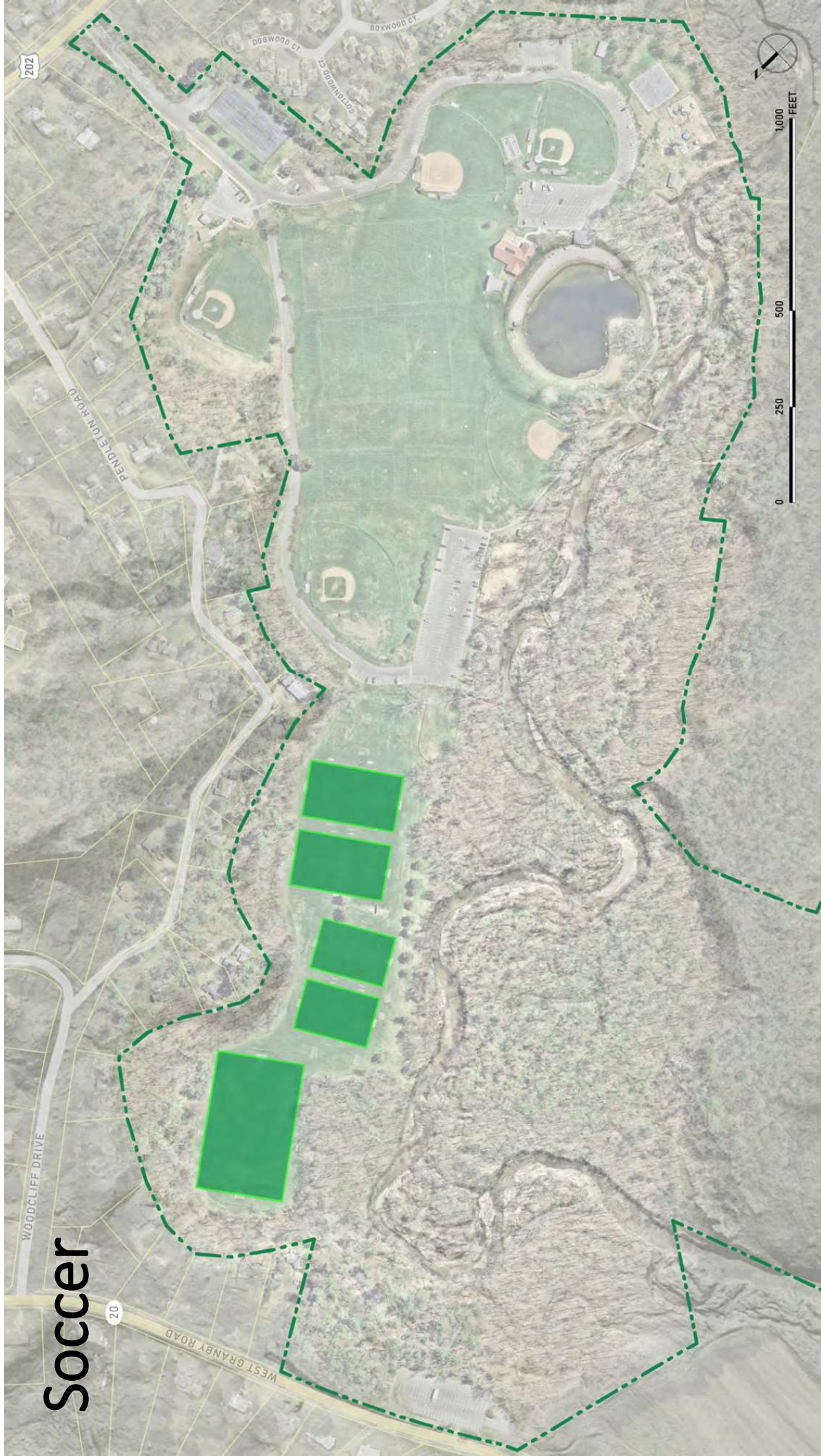


# Baseball and Softball



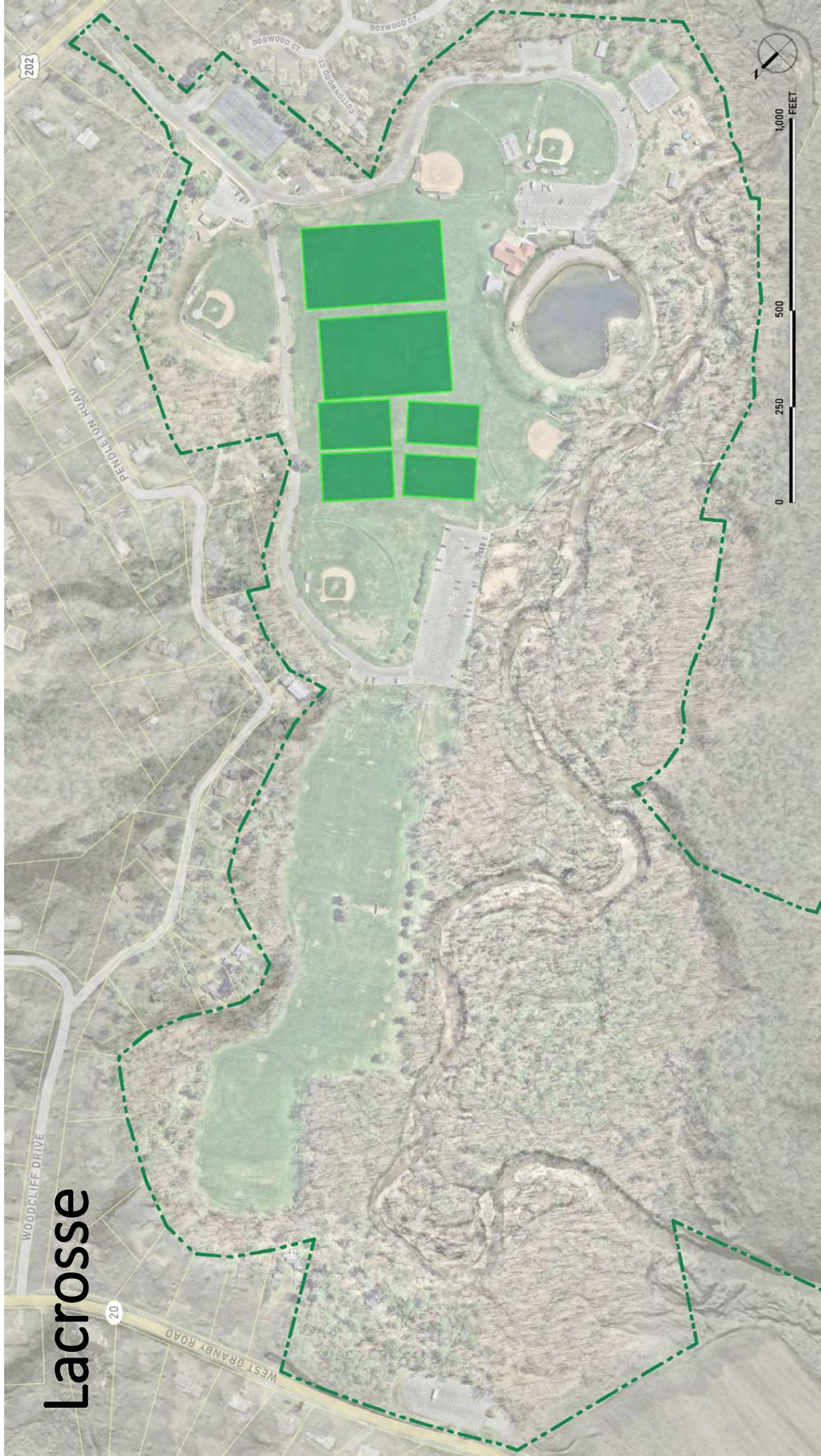


# Soccer



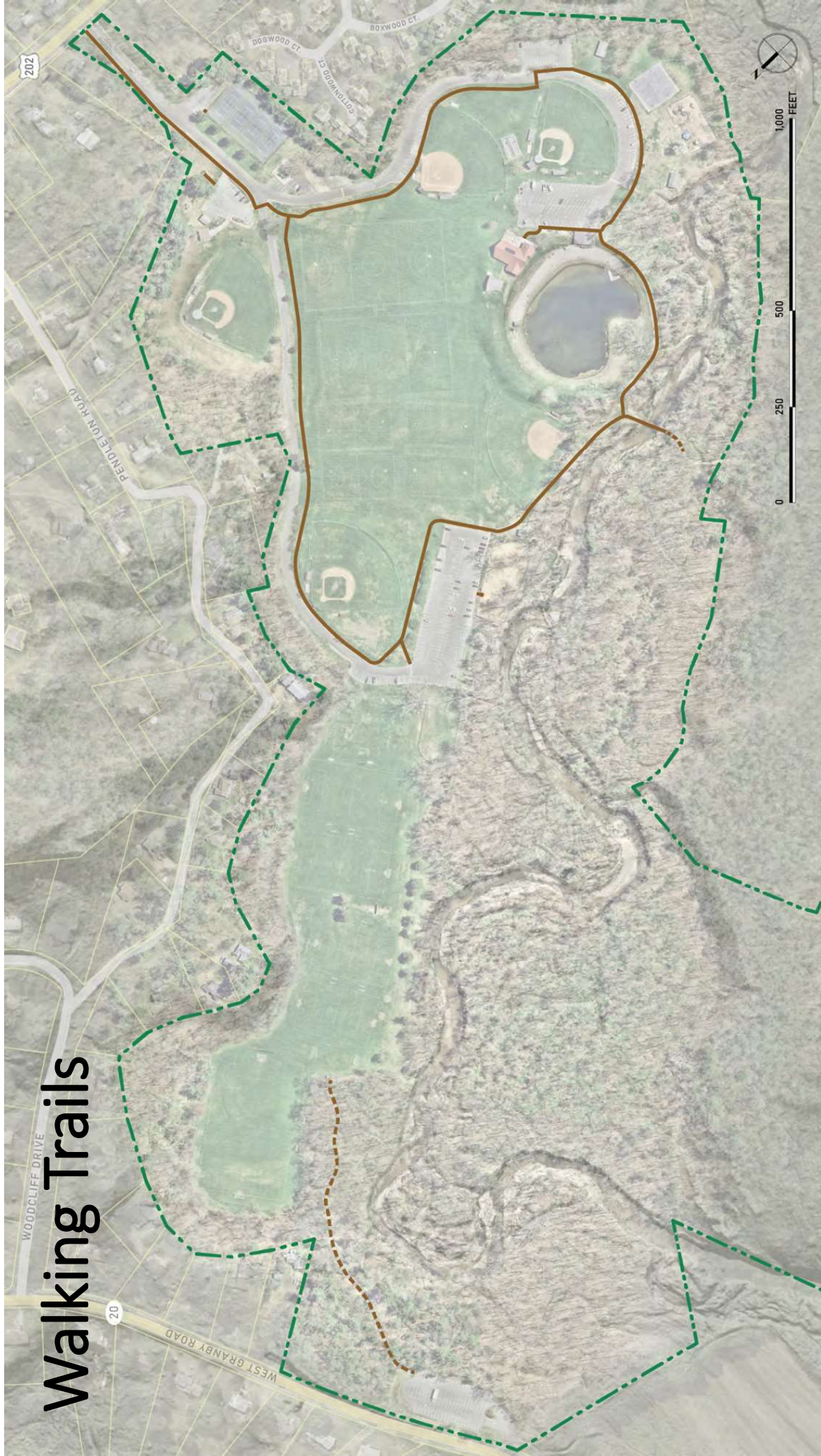


# Lacrosse





# Walking Trails





# Parking Areas





# Buildings and Pavilions



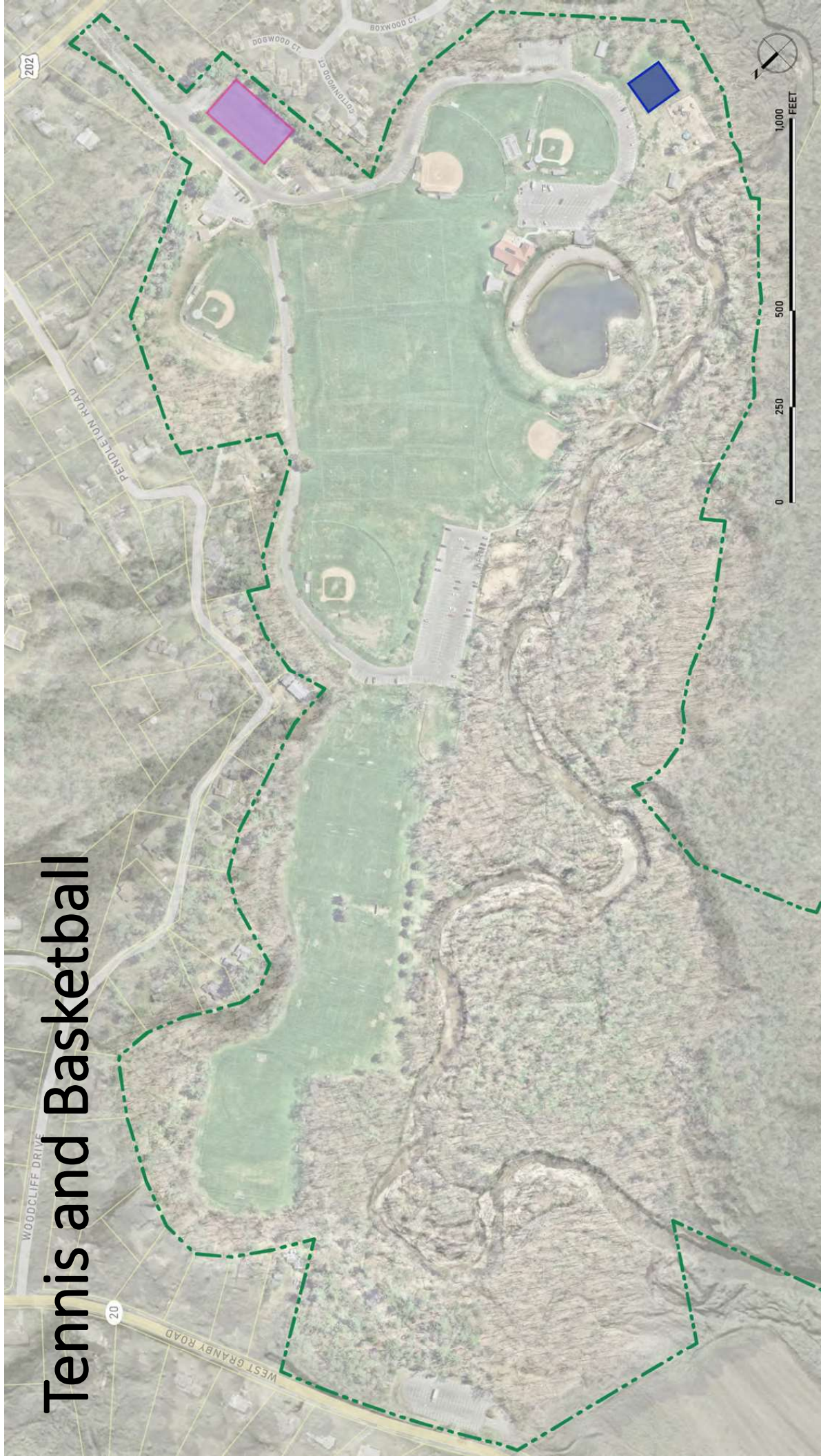


# Playgrounds

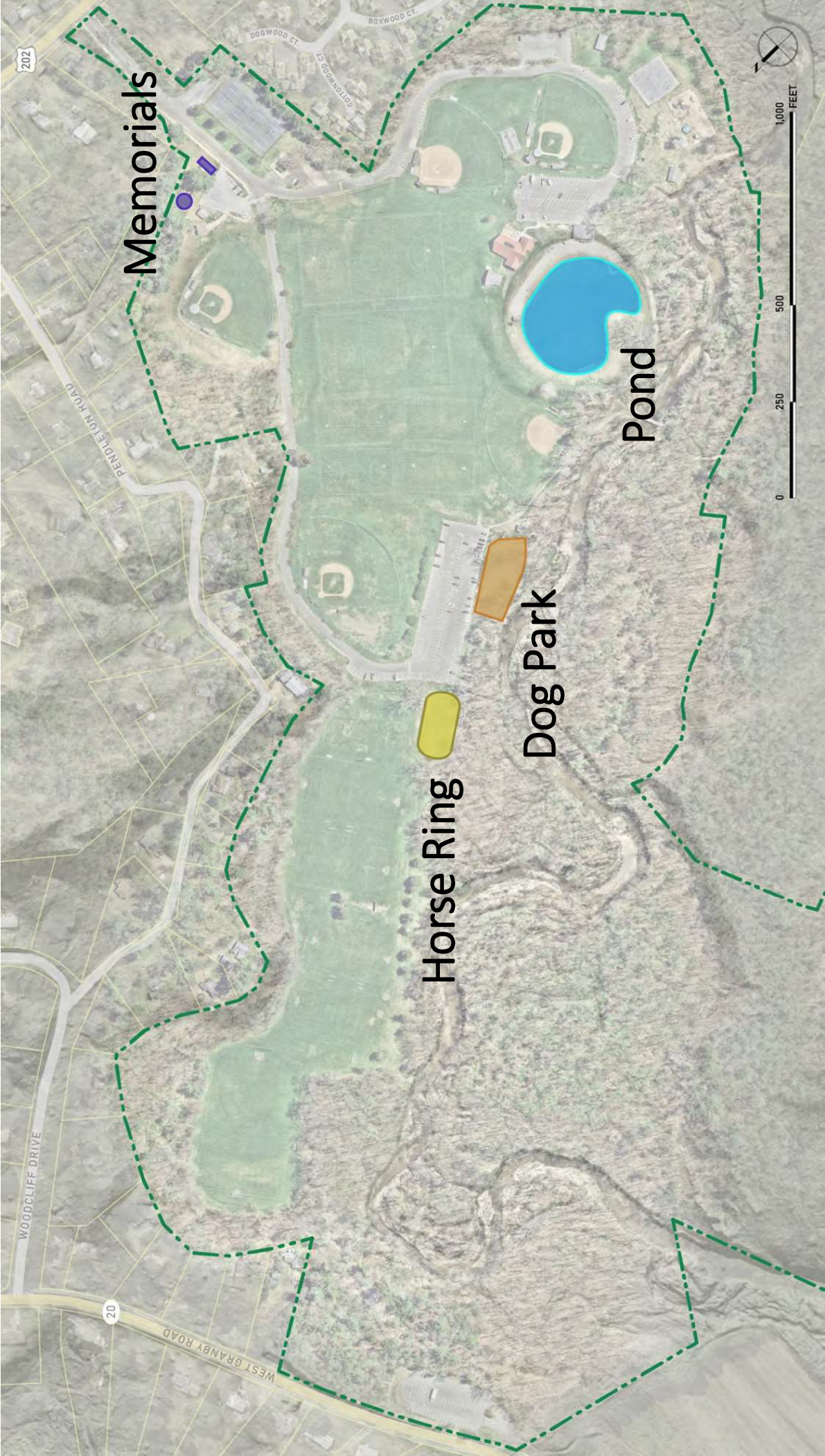




# Tennis and Basketball







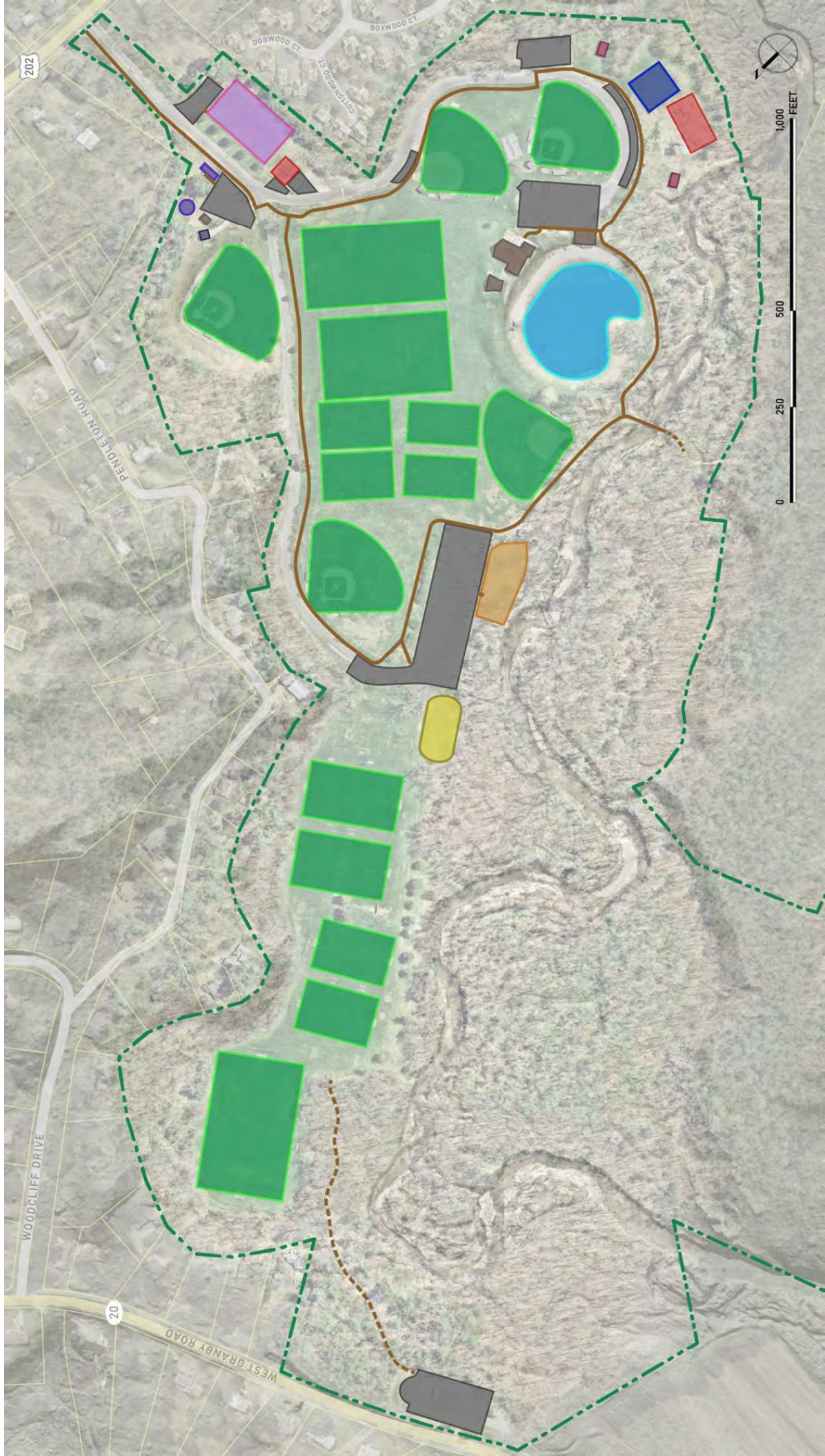
Memorials

Pond

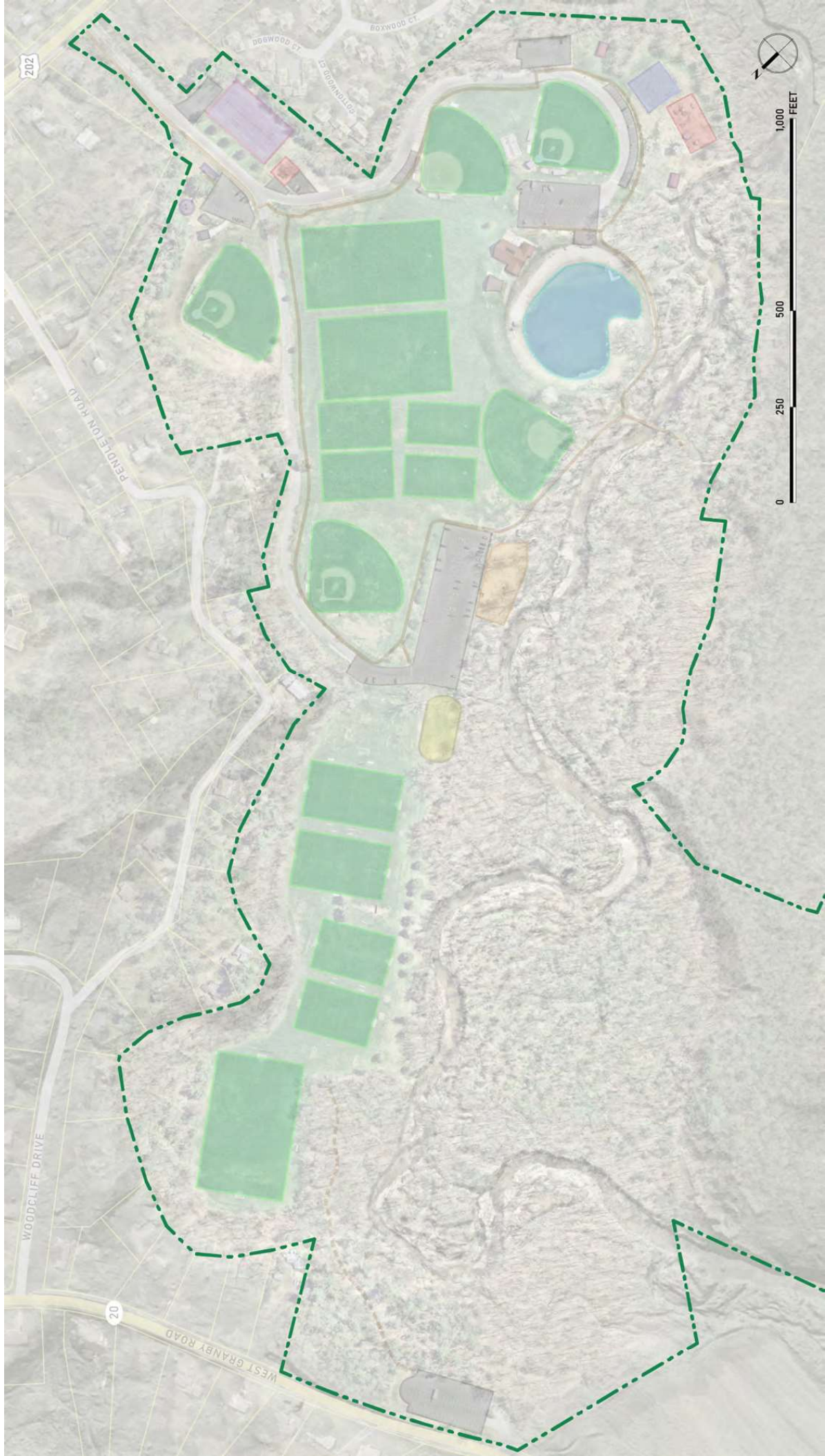
Horse Ring

Dog Park



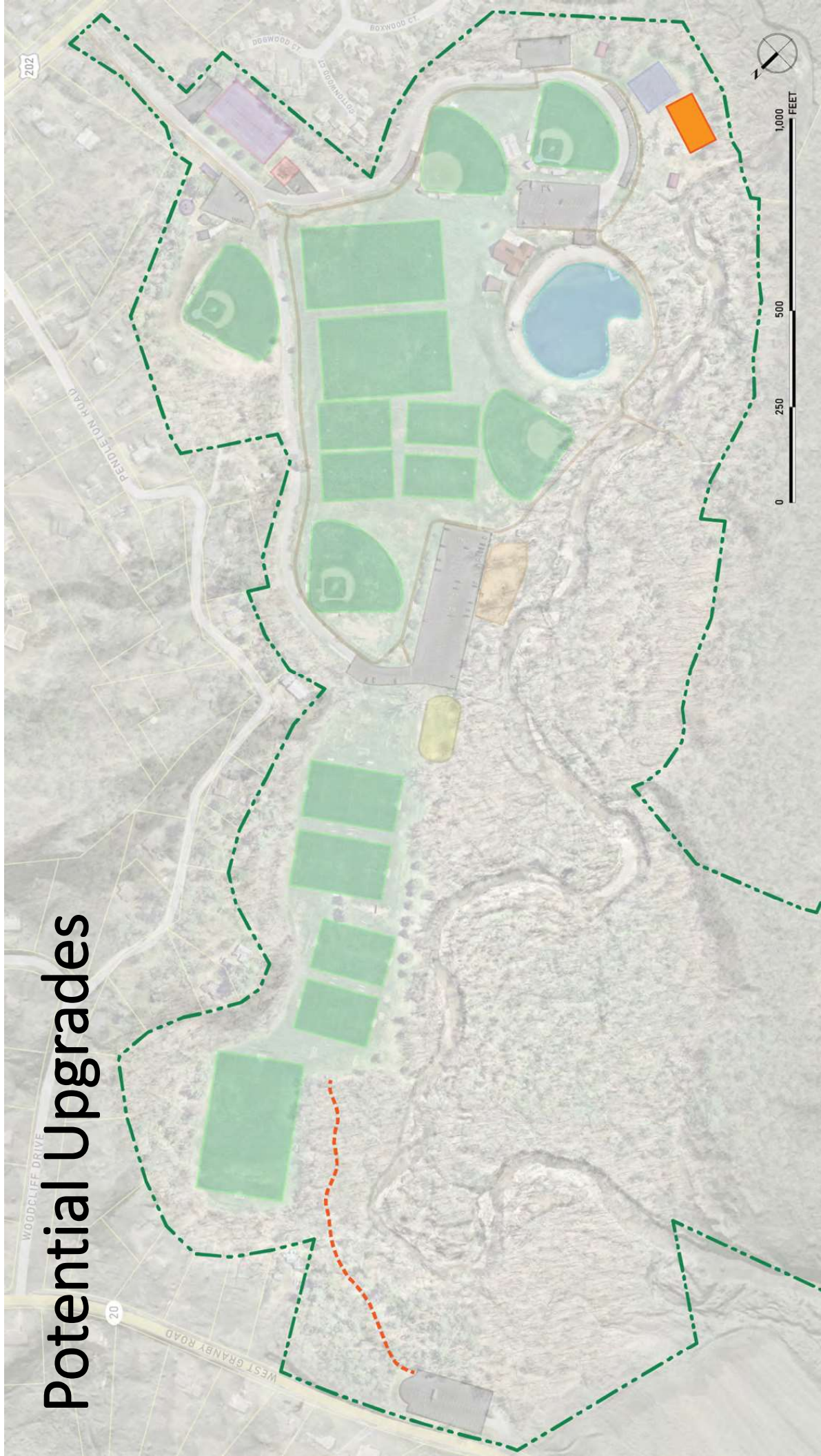








# Potential Upgrades





# Sanitary



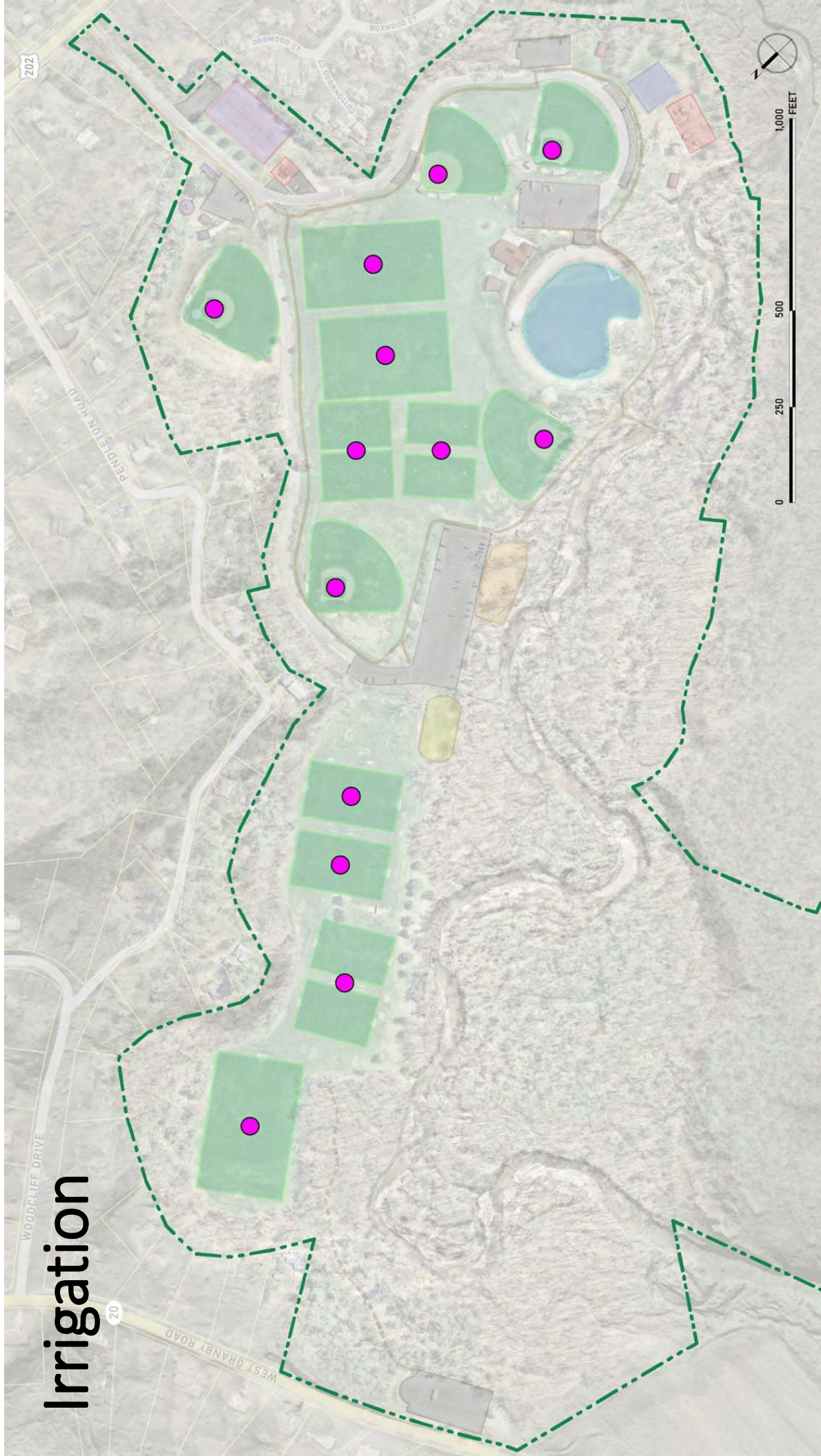


# Electrical





# Irrigation



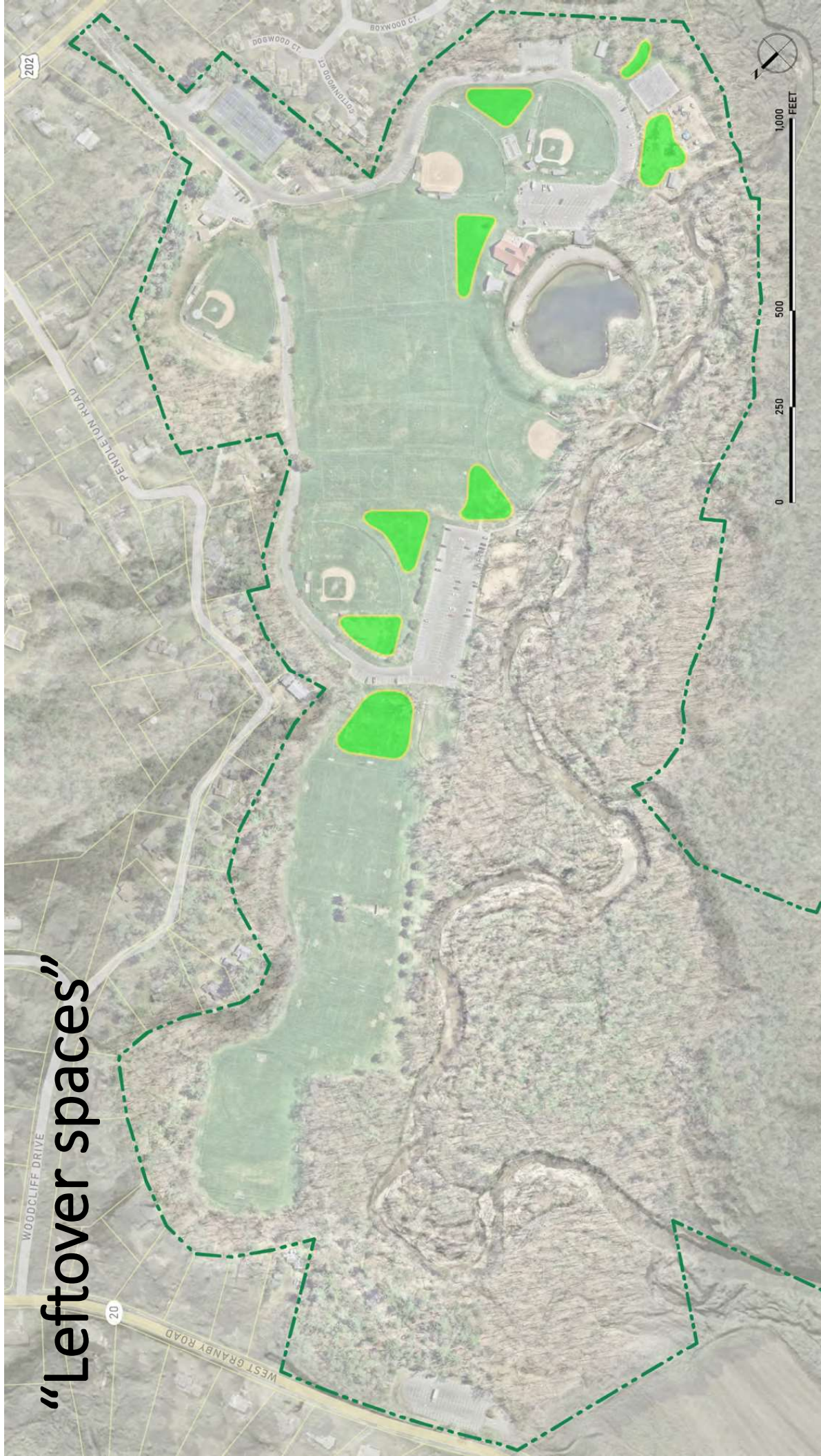


# Water



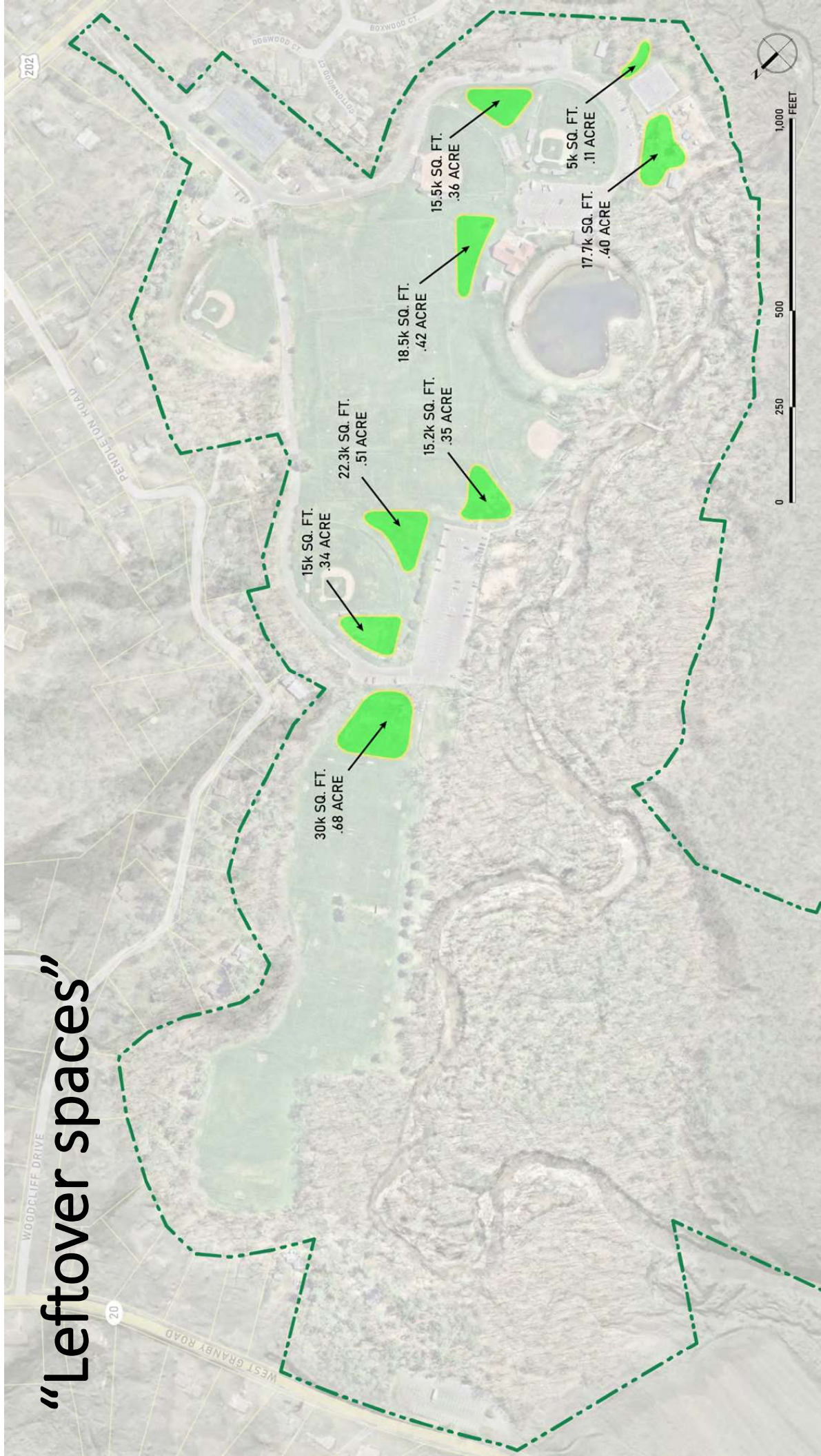


“Leftover spaces”





# "Leftover spaces"

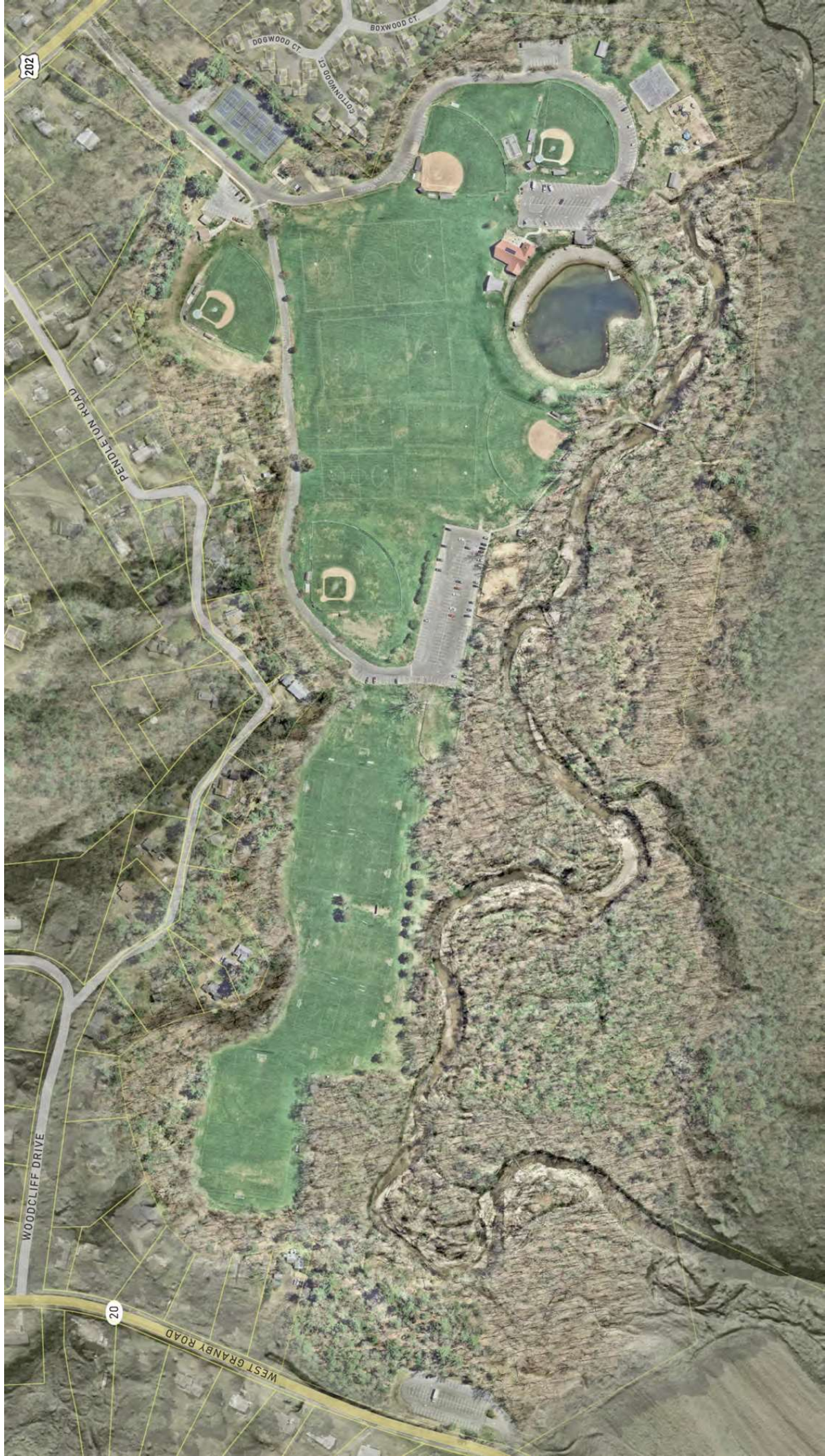




# Flood-prone area (approximate)









# Ahrens Park



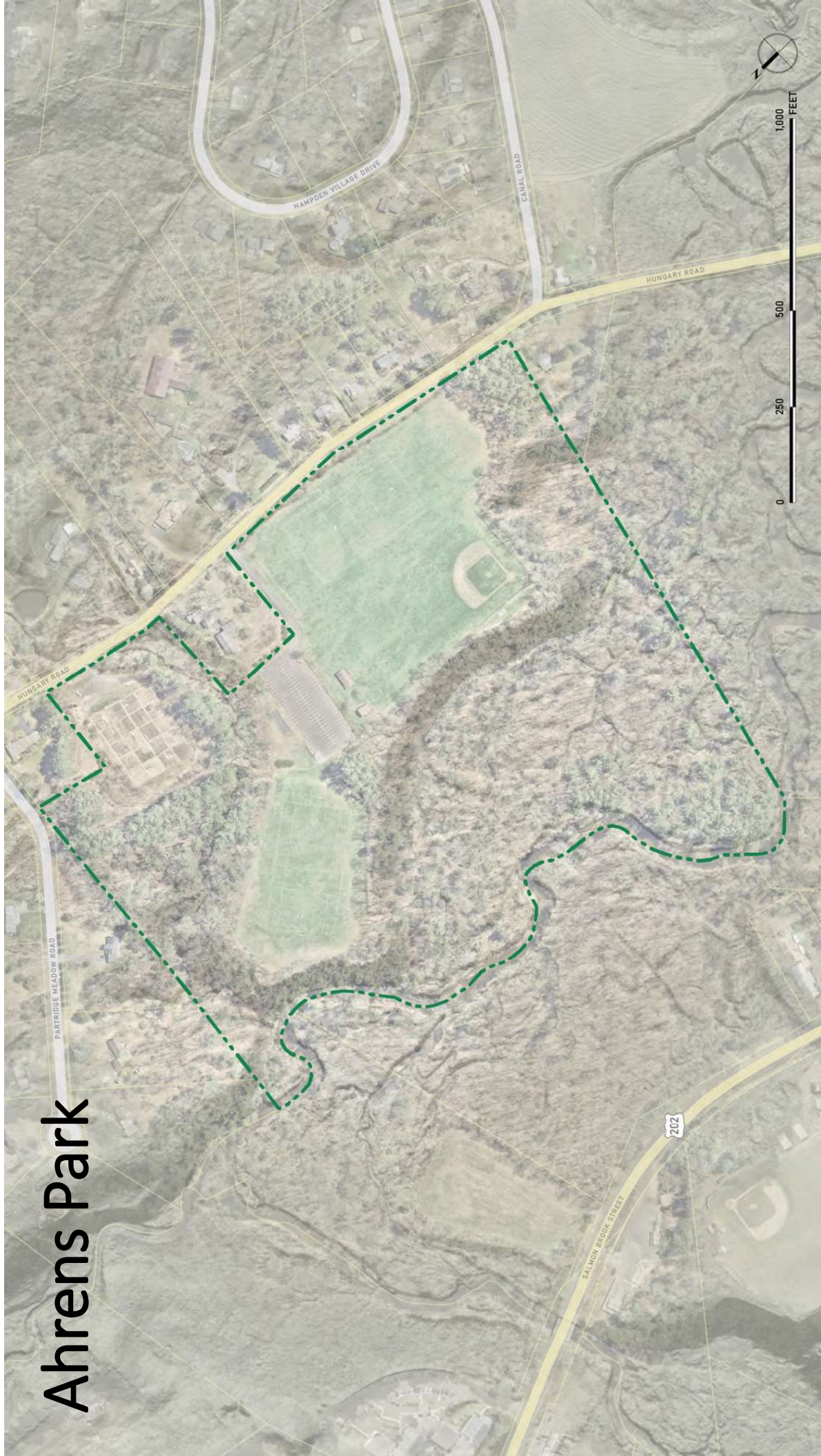


# Ahrens Park



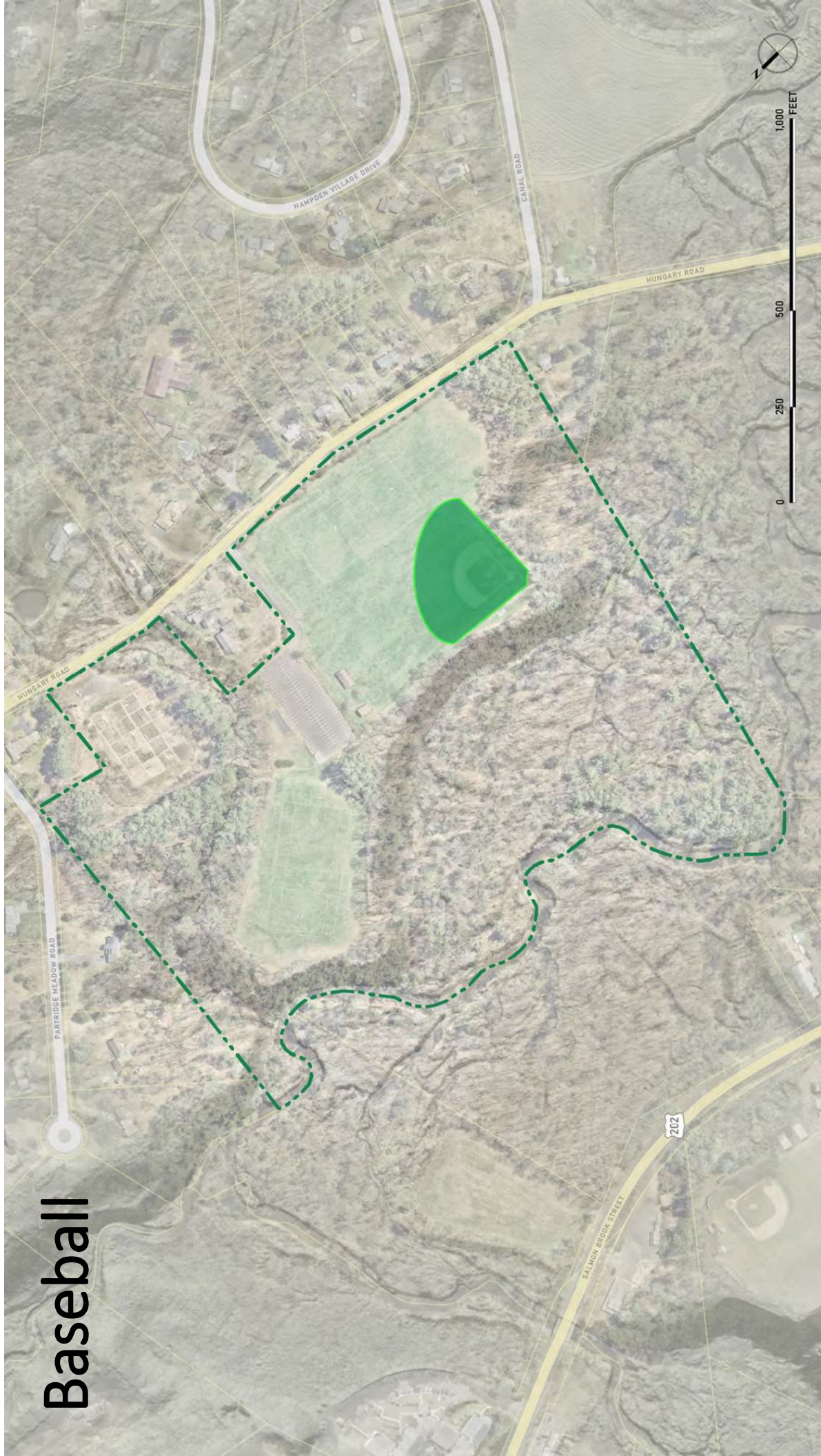


# Ahrens Park



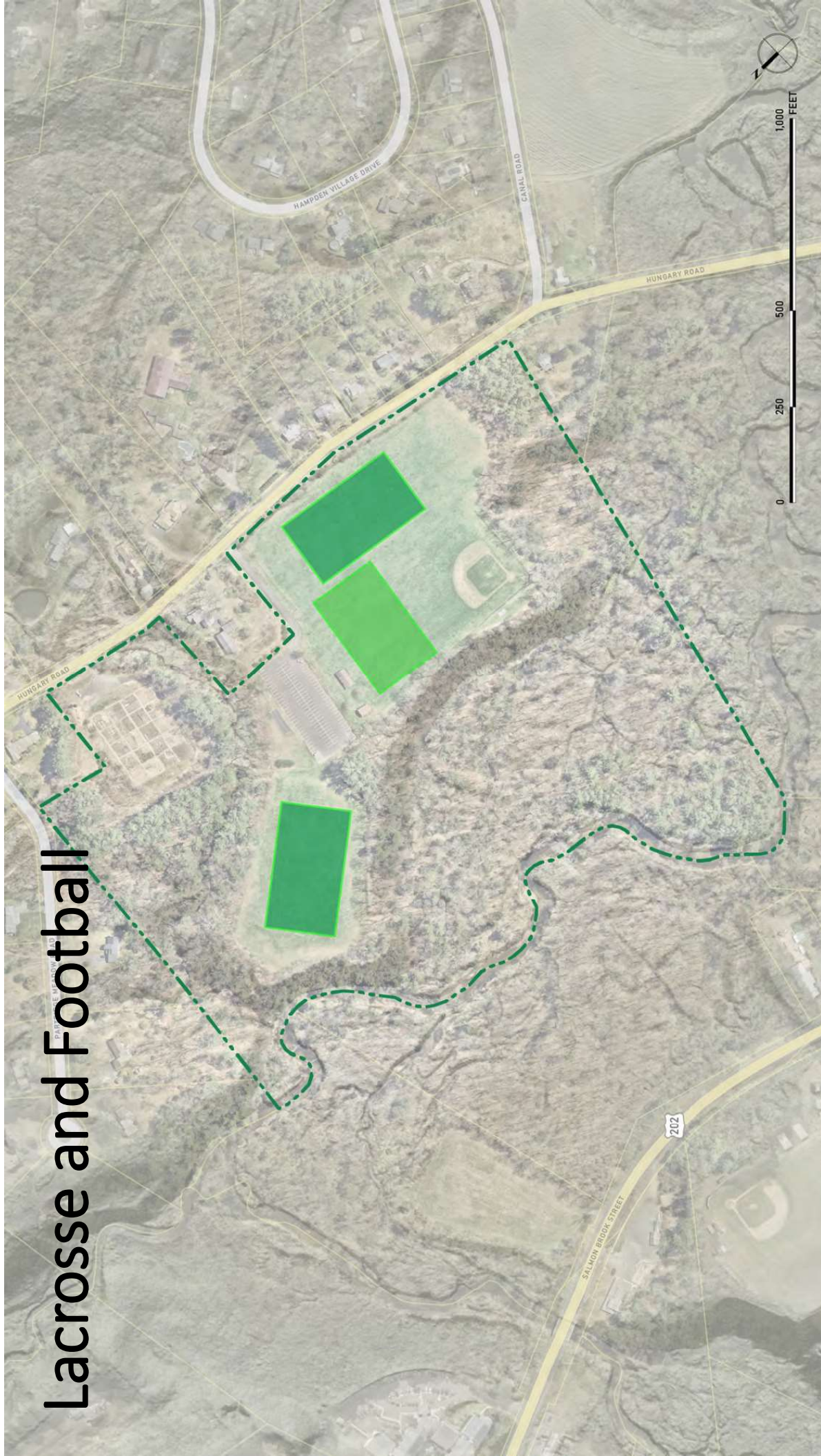


# Baseball



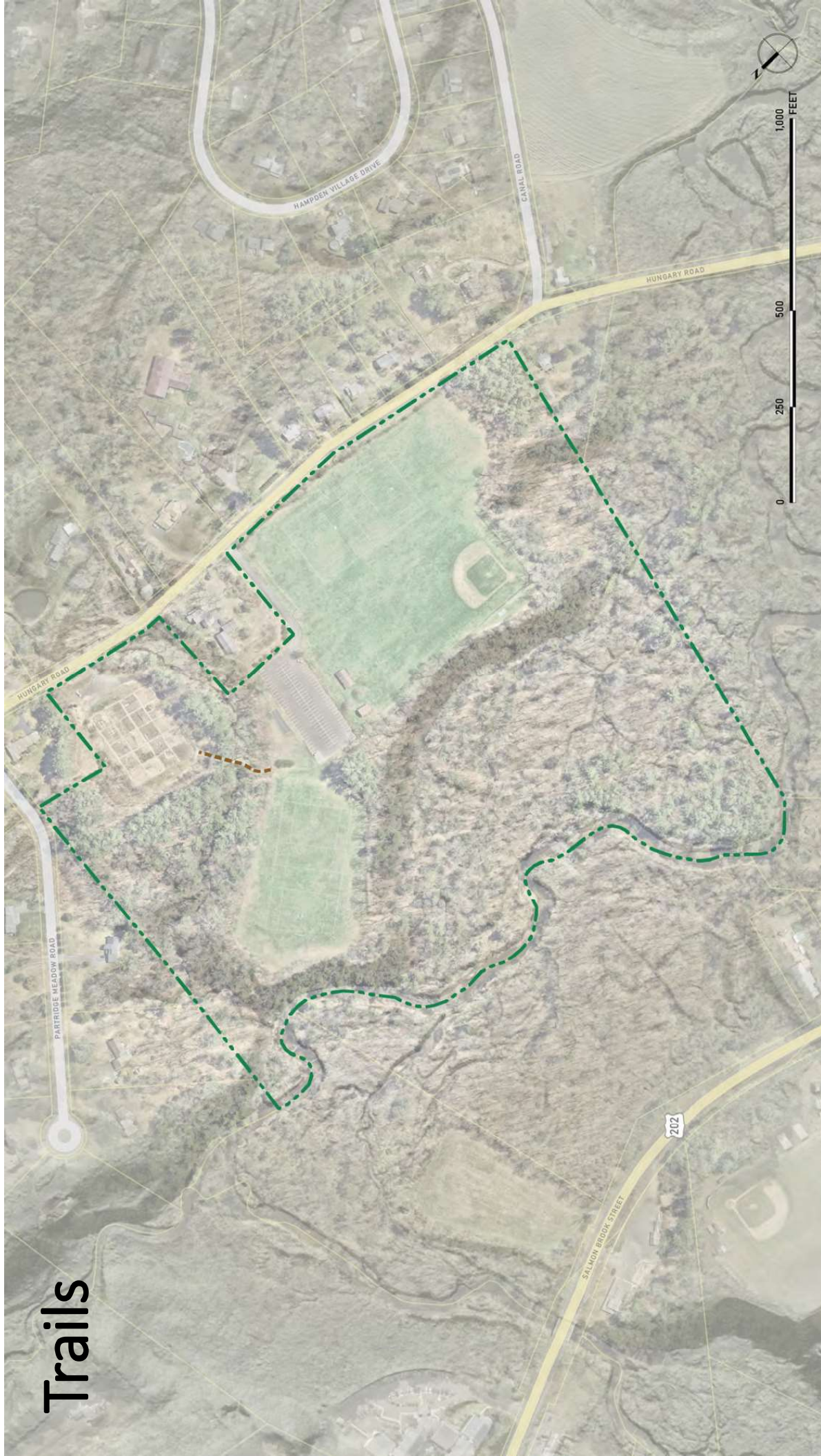


# Lacrosse and Football



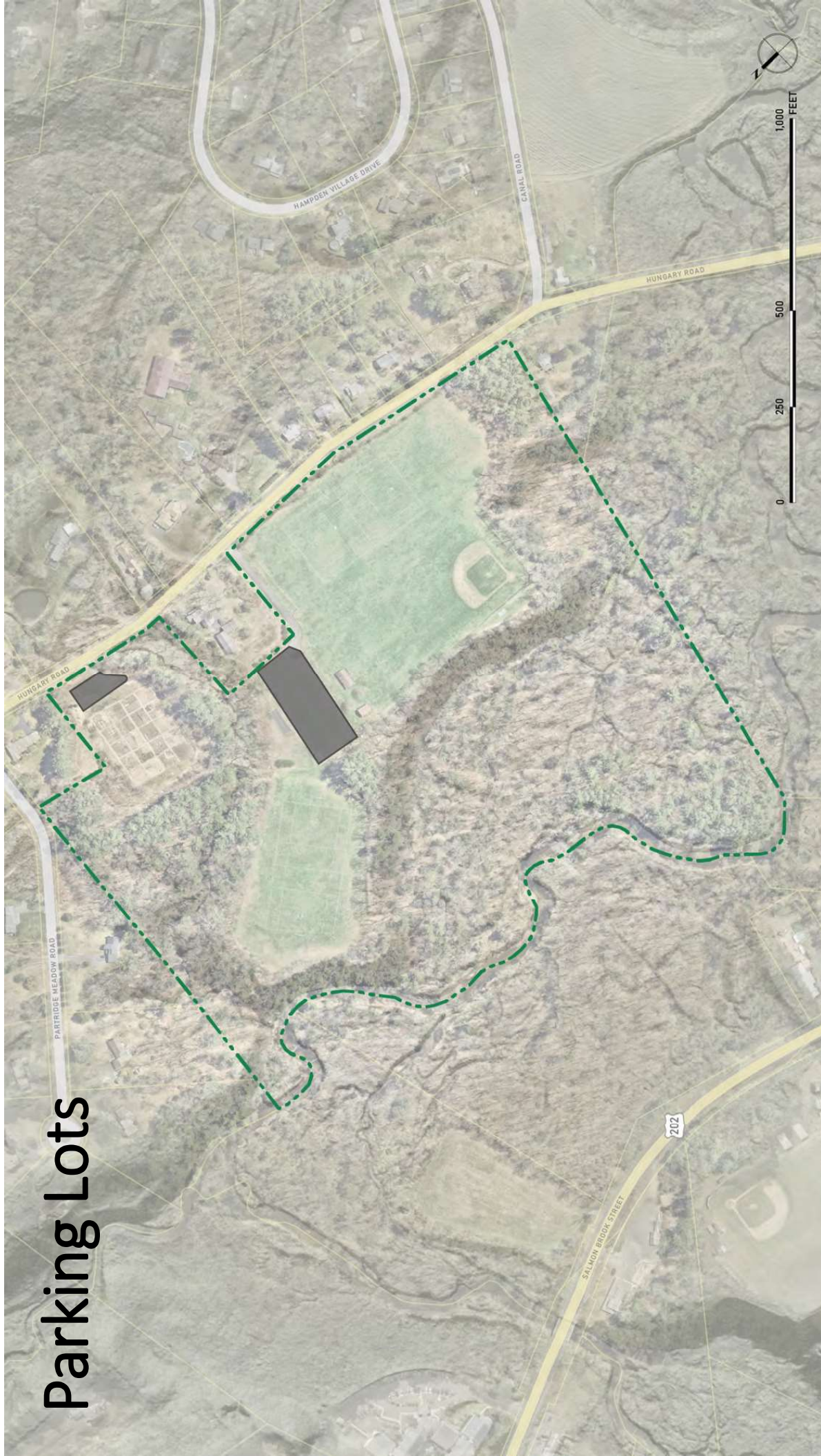


# Trails



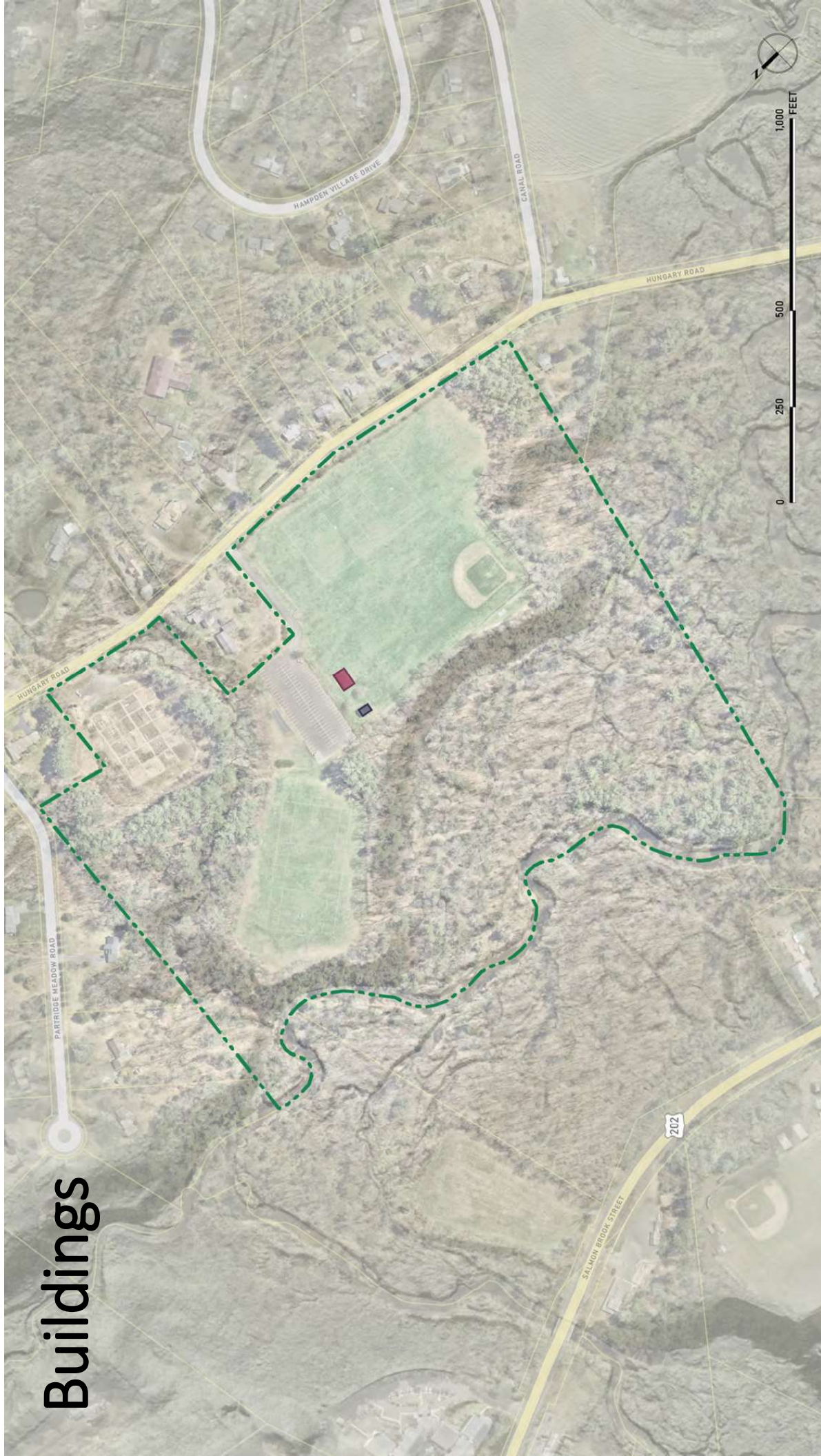


# Parking Lots

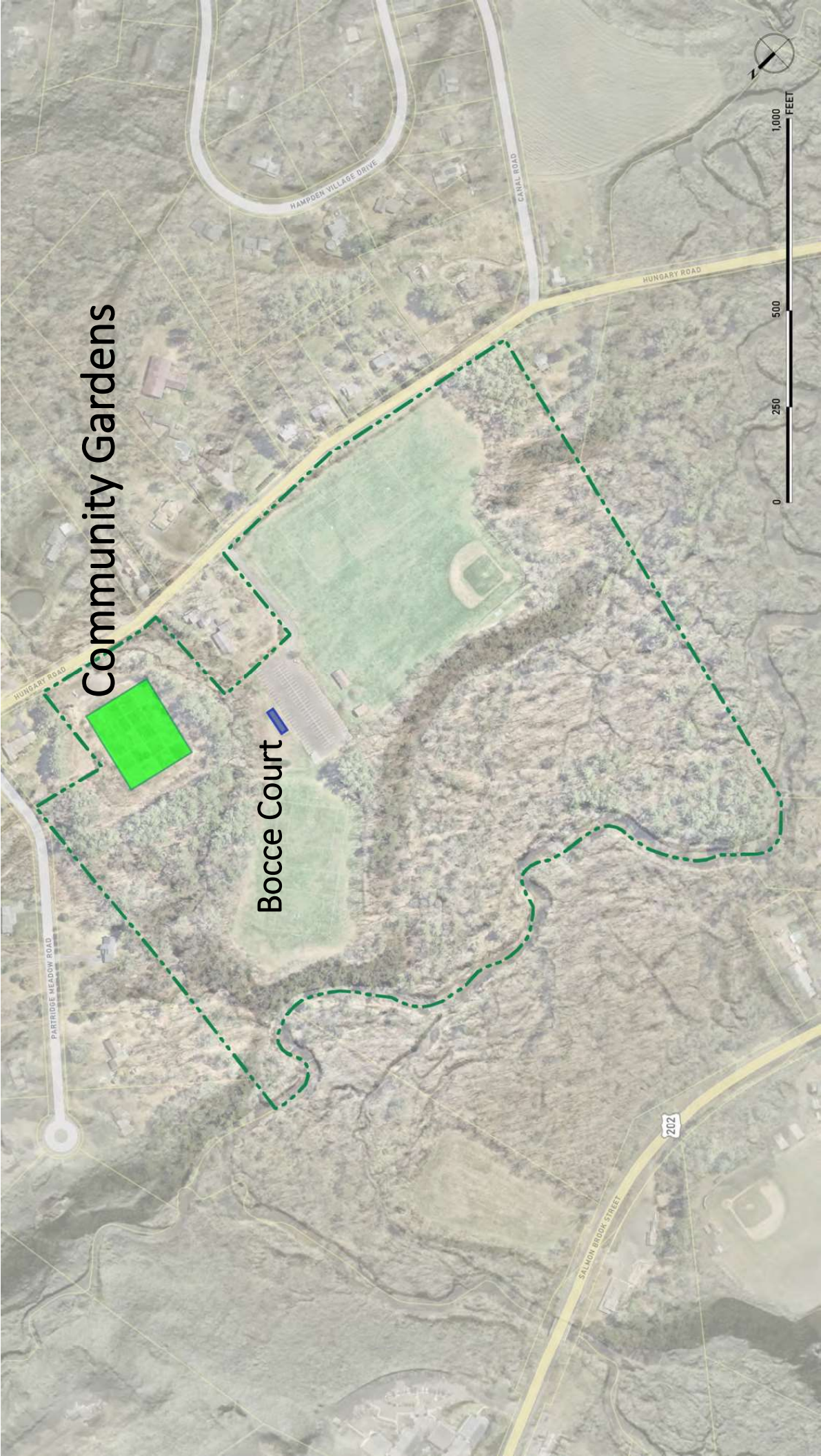




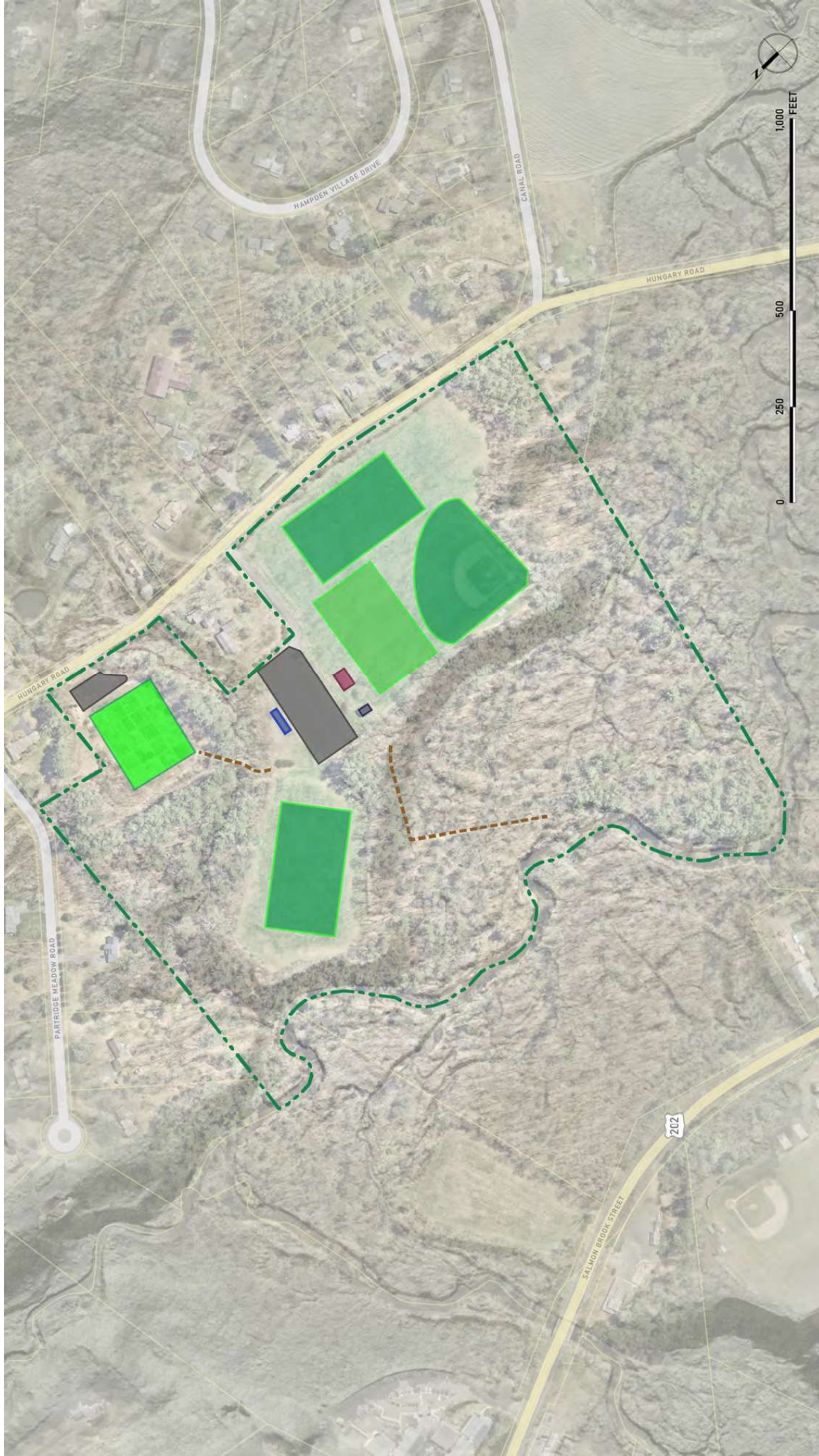
# Buildings



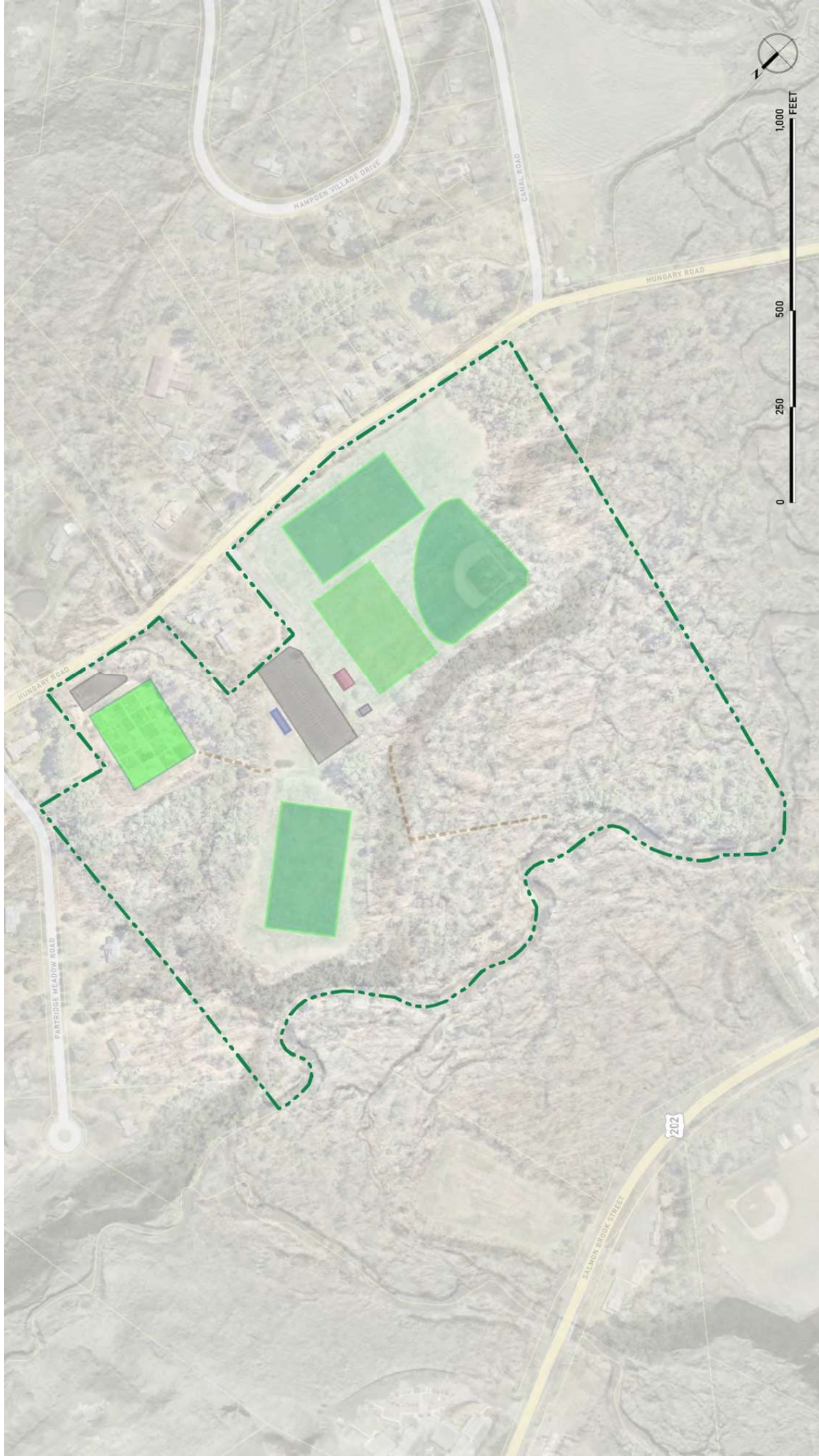






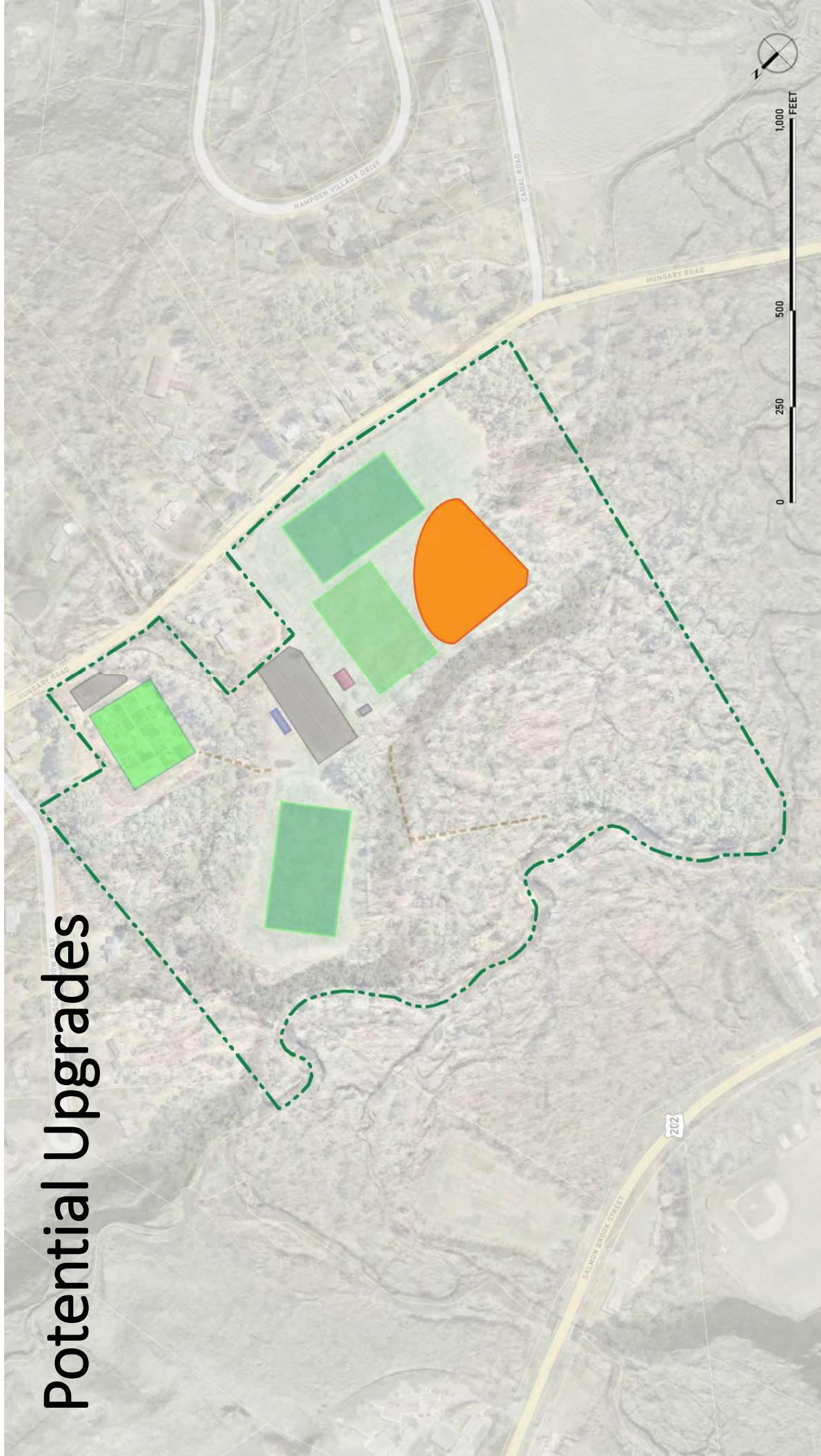








# Potential Upgrades









A photograph of a forest path covered in fallen leaves. Several orange and white traffic cones are placed along the path. A semi-transparent grey rectangular box is overlaid on the center of the image, containing the word "Challenges" in white text.

# Challenges



# Challenges

- Coordinating many facilities, periodic updates
- Flood-prone area in south end of Salmon Brook Park
- Identifying locations for new park facilities:
  - Limited available space in Salmon Brook
  - Use of Ahrens Park



*Erosion on unpaved path to Rt 20 parking lot*



*Playground in flood-prone area*







A wide-angle photograph of a grassy field, possibly a park or sports field, with trees in the background. A large, semi-transparent text box is centered over the image, containing the word "Opportunities" in white. The field is green and appears to be well-maintained. In the background, there are several trees, some of which are bare, suggesting a cooler season. A small, dark structure, possibly a goalpost or a small building, is visible in the distance. The sky is blue with some light clouds. The overall scene is peaceful and open.

# Opportunities



# Opportunities

- Underutilized space at Ahrens, could locate new facilities there
- Opportunities for more efficient uses of space at Salmon Brook
- Both parks have parking, restrooms, infrastructure
- Parks well-utilized by community and in good condition overall



*Ahrens Park restroom*



*Ahrens Park fields*



# Opportunities

## New Recreational Features?

- Misting/ Cooling
- Splash Pad
- Fitness Equipment
- Skate Park
- Pump Track





# Opportunities

## Making Space?

- Re-arranging sports fields to free up space?
- Efficiencies with times of year, underutilized fields at Ahrens?
- Relocating any features to Ahrens?





# Opportunities

## Improving Sports Fields?

- Adding lights?
- Adding/ improving bleachers?





# Opportunities

## New Landscape Features?

- Shade Structures
- Trees
- Pollinator Gardens
- Food Forests
- Benches, Picnic Tables
- Upgraded Nature Trails





# Opportunities

## Playground Upgrades?





# Discussion





# Discussion Questions

- What new recreational facilities would you like to see at the parks?
- What are the most valuable aspects of the parks to you?
- Are there particular issues you think need to be addressed in the parks?
- Would you be open to relocating any park elements to Ahrens Park?
- Any other questions or comments?





# Thank You!

- Next Steps:
  - Take the online survey!
  - GZA to draft Master Plan
  - Follow up public meeting to share draft Master Plan
  - Finalize Master Plan
- We'll stick around to talk informally – ask us questions!
- Feel free to add sticky note comments to maps



Take the online survey!







**SALMON BROOK PARK - EXISTING CONDITIONS**  
**TOWN OF GRANBY, CT**

04/01/2025  
Prepared by GZA GeoEnvironmental, Inc.  
Project Number 15.0167378.00







**AHRENS PARK - EXISTING CONDITIONS**  
 TOWN OF GRANBY, CT  
 04/01/2025  
 Prepared by CTA, Inc.  
 Project Number 15.04.2738.08



SOURCES: USGS, CT DEPT. OF CONSERVATION